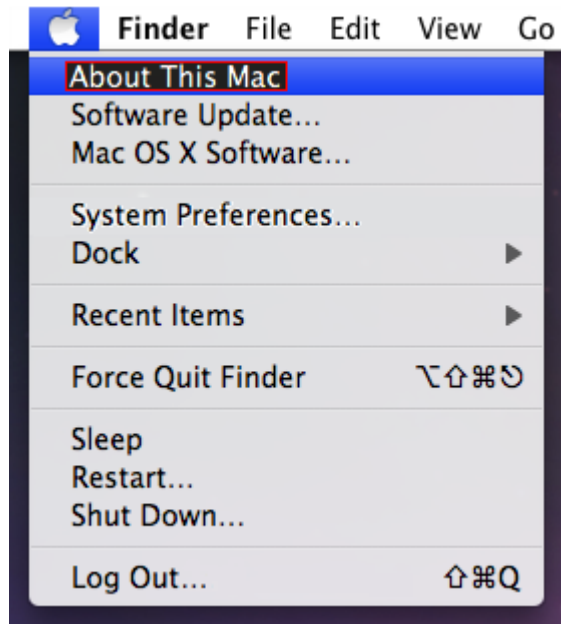


Finding your network address for wireless devices:

- **Mac OS X Tiger / Leopard / Snow Leopard (iPod & iPhone see page 3-4, iPad see page 5-6)**

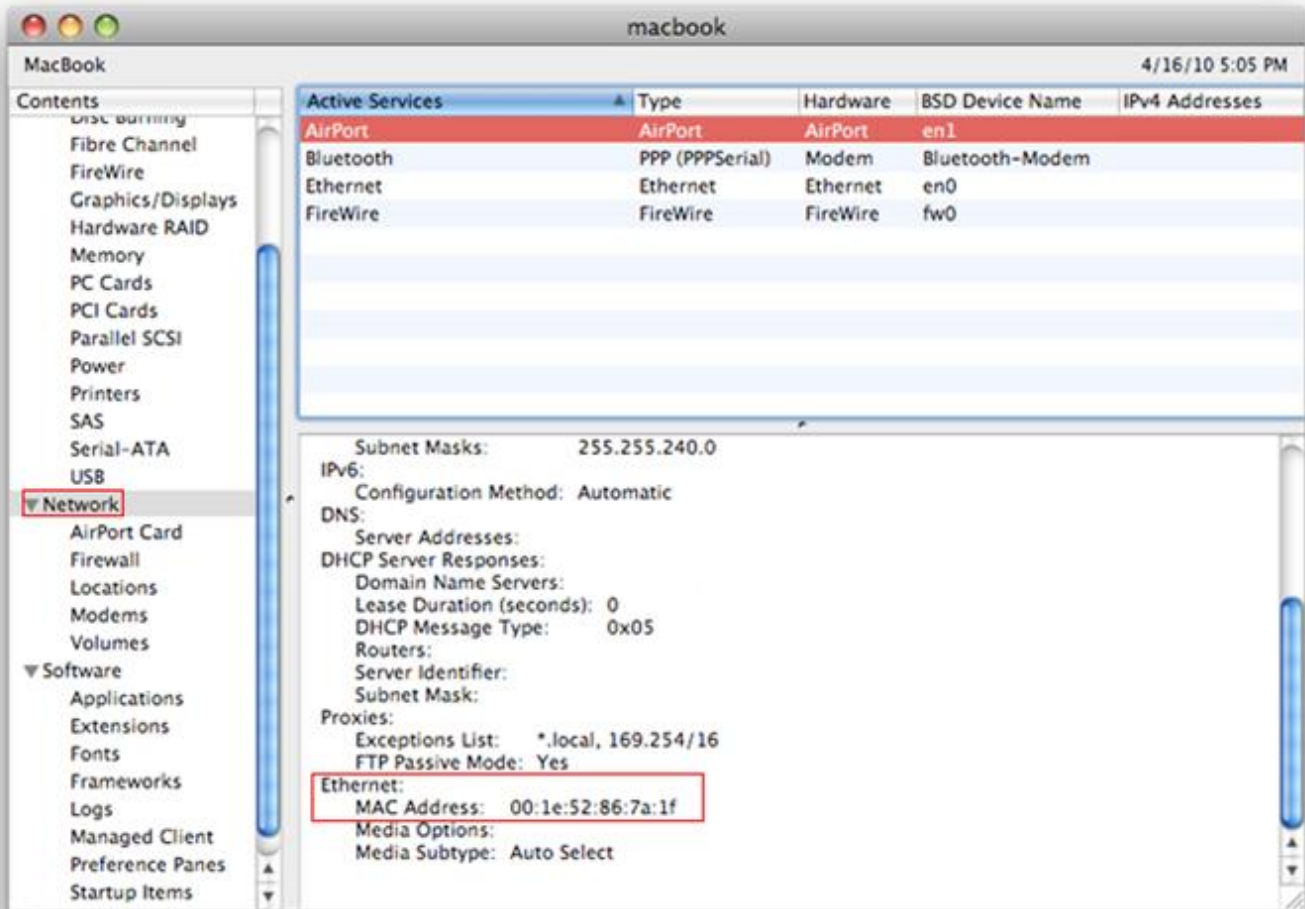
1. Click the **Apple** button on the top left corner. Select the **About This Mac** option. A window will pop up.



2. Click the **More info...** button.



3. A window will pop up. In the contents menu on the left, select **Network**.



4. Under **Active Services**, **Airport** card should be selected (*If the AirPort connection is missing you cannot register*).
5. In the bottom part of the window, you are going to scroll down until you see **Ethernet**. Underneath it is a row that says **MAC Address**. It will be a 12-digit combination of letters and numbers. Write down this number.
6. Submit your information and the address in the **Wireless Network Card Hardware Address** field at:

<http://www.robertmorris.edu/helpdesk/nic/>

It will take about 24 hours for your information to be submitted. Report any issues with network connectivity to the techs on duty or send a form to tech support at:

<http://www.robertmorris.edu/helpdesk/wirelessaccesshelp/index.html>

- iPod Touch & iPhone

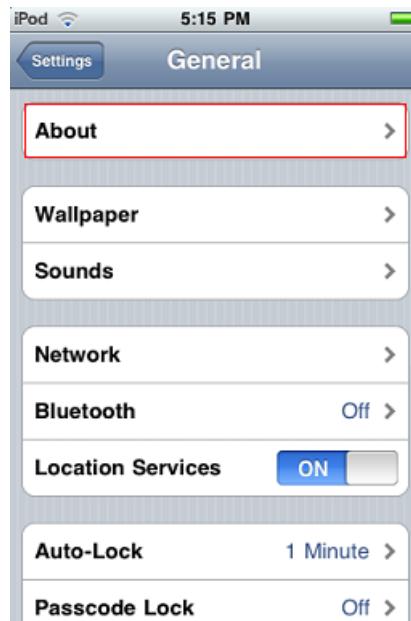
1. In the Home Screen, select **Settings**.



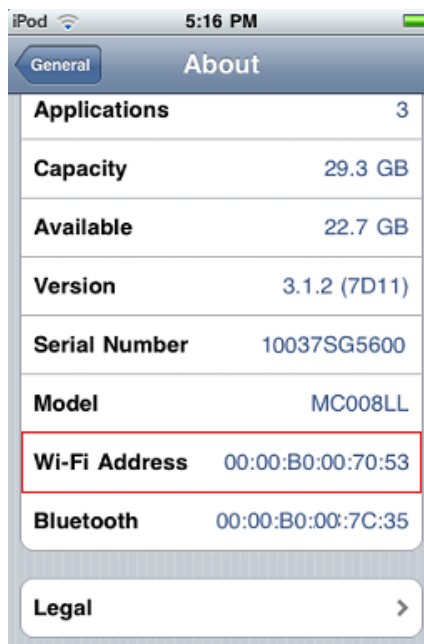
2. In the **Settings** menu, select **General**.



- In the **General** settings, select **About**.



- Scroll down and look for **Wi-Fi Address**. It will be a 12-digit combination of letters and numbers. Write down this number.



- Submit your information and the address in the **Wireless Network Card Hardware Address** field at:

<http://www.robertmorris.edu/helpdesk/nic/>

It will take about 24 hours for your information to be submitted. Report any issues with network connectivity to the techs on duty or send a form to tech support at:

<http://www.robertmorris.edu/helpdesk/wirelessaccesshelp/index.html>

- iPad (any version)

1. In the Home Screen, select **Settings**.



2. In the **Settings** menu in the left pane, select **General**, and on the right pane, select **About**.



3. Scroll down and look for **Wi-Fi Address**. It will be a 12-digit combination of letters and numbers. Write down this number.



4. Submit your information and the address in the **Wireless Network Card Hardware Address** field at:

<http://www.robertmorris.edu/helpdesk/nic/>

It will take about 24-48 hours for your information to be submitted and processed. Report any issues with network connectivity to the techs on duty or send a form to tech support at:

<http://www.robertmorris.edu/helpdesk/wirelessaccesshelp/index.html>